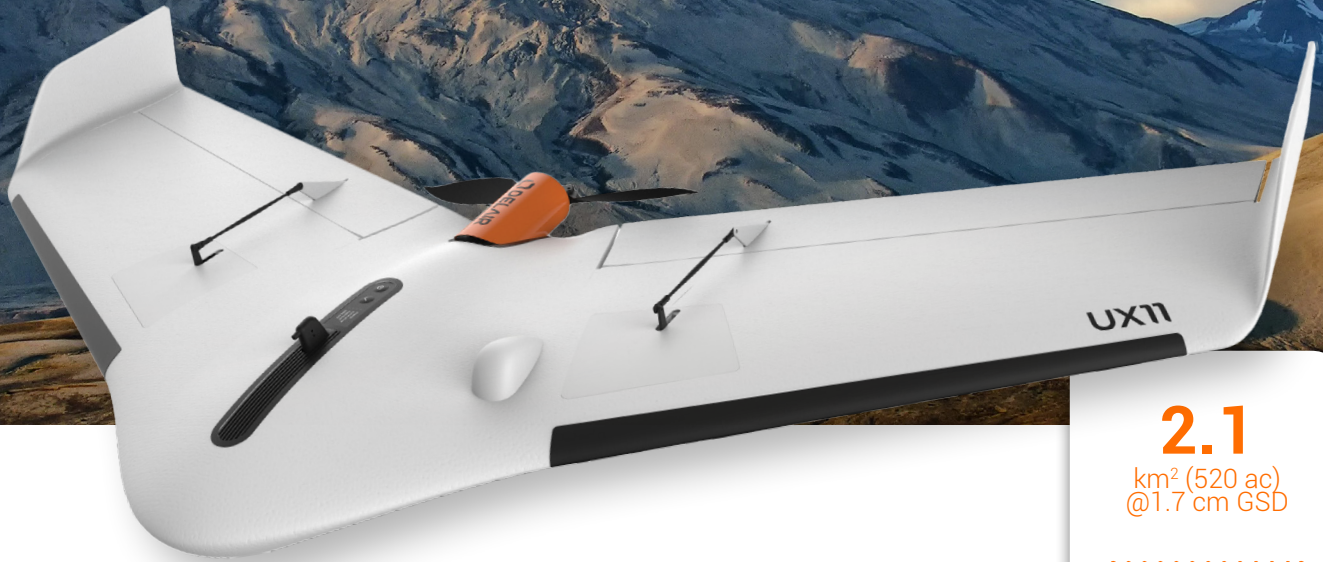


STABLE & EASY-TO-USE

Large-area mapping with centimeter-level precision and optional PPK for survey-grade results



2.1
km² (520 ac)
@1.7 cm GSD

3G/4G
Connectivity

1
GSD down
to 1 cm

59
Min
Endurance

Professional line

UX11

PROFESSIONAL SMALL UAV,
SURVEY AND MAP WITHEASE

INDUSTRIES



Geospatial



Mines and
Quarries



Agriculture
& Forestry



Emergency

KEY APPLICATIONS

Mapping & GIS

Surveying

Construction

Environmental and Conservation

Surface Mining

Aggregates

Public Land Management

Landfill Management

KEY DIFFERENTIATORS

Map large areas faster - cover 2,1 km² (520 acres) with 1.7 cm GSD at 122 m flight height. Industrial camera with optional PPK activation for survey-grade results down to 1 cm precision.

BVLOS-ready communications - mobile connectivity via 3G network (4G-ready) for unlimited range or optional radio link.

Precise takeoffs and landings - high-angle (30 degrees) takeoffs and landings for use in confined areas, low-speed landing using distance-measurement technology.

Easy-to-use Android™ mission planning and monitoring app - pre-flight checklist, no-fly zones, modern user interface, in-flight data review.

UAV SPECIFICATIONS

| | |
|---|---|
| Endurance ¹ | Up to 59 min |
| Weight (payload included) | 1.4 kg (3.1 lbs) |
| Wingspan | 1.1 m (43 in) |
| Deployment time ¹ | 5 min |
| Cruise speed | 54 km/h (34 mph) |
| Take-off / Landing | Hand-launched (angle: 30 degrees) / Belly landing (angle: 30 degrees) |
| Flying range ¹ | 60 km (37 mi) |
| Maximum surface area covered ¹ | |
| | 1.0 km ² (250 ac) mapped with 1 cm GSD at 75 m (246 ft) AGL |
| | 2.1 km ² (520 ac) mapped with 1.7 cm GSD at 122 m (400 ft) AGL |
| | 8.4 km ² (2,075 ac) mapped with 7 cm GSD at 500 m (1,640 ft) AGL |

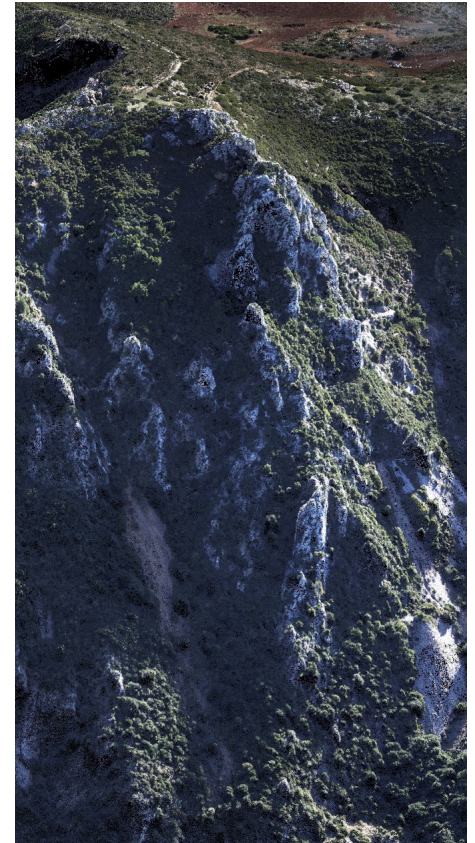
Communication range

| | |
|----------------------------------|-------------------------------------|
| 3G/4G | Unlimited (within network coverage) |
| Optional radio link ¹ | 3 km (1.9 mi) |

Operating conditions

| | |
|---------------------------------------|---|
| Weather | 45 km/h (28 mph) wind resistance, moderate rain |
| Maximum takeoff altitude ¹ | 4,000 m (13,100 ft) |
| Landing accuracy ¹ | 5 m (16 ft) |

GNSS..... PPK optional (software activated), L1/L2, GPS+GLONASS+SBAS



SENSOR

Industrial-grade RGB camera sensor built-in

| | |
|---|--|
| Sensor type | Global shutter, distortion free |
| Image resolution | 21.4 Mpix |
| Dynamic range | 70 dB |
| HFOV / VFOV | 38° / 32° |
| In-flight sensor configuration | Auto or manual (shutter, gain, brightness) |
| In-flight picture transmission and QAQC | Real-time histogram plot and photo review |
| High quality raw output | |

DELIVERABLES

RAW DATA COMPATIBLE WITH ALL PHOTOGRAMMETRY SOFTWARES.

ANALYTICS

Ortho Image & DSM (Digital Surface Model), Contour Lines, Cross Sections, Elevation Profiles, Stockpile Volume Calculation, Vegetation Encroachment, Anomaly Detection, and many more.

ANALYTICS COMPATIBLE WITH

ESRI ArcGIS, QGIS, Surpac, GlobalMapper, AutoCAD, PLS-CADD and many more.

¹ Actual results may vary depending on UAV configuration, battery age and condition, and operational, environmental and climate conditions.



www.delair.aero