



Survey Technical Support Notes

May 2016

Title: How to create the INCORS Survey Style

Overview: Learn how to setup the Survey Style and GNSS contact for the Indiana Department of Transportations' free RTK network (INCORS).

Equipment: Trimble TSC3

Results: Allows User to have access to INDOTs' free RTK network provided that the User has contacted INDOT and received their own Username and Password.

Procedure: Step 1: Please visit INDOTs' website (<http://incors.in.gov/rtk.aspx>) and sign up for your Username and Password.

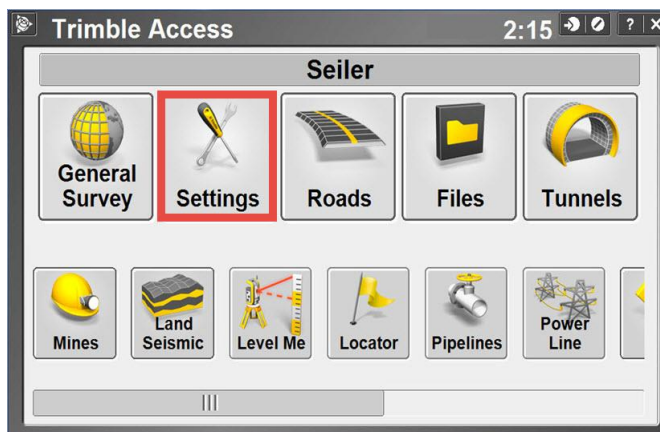
RTK Access

To get access to our RTK Service you must first agree to our User Agreement and Data Disclaimers. Complete the [\[User Agreement\]](#), print, sign and return it to our office for processing by mail, fax or e-mail to:

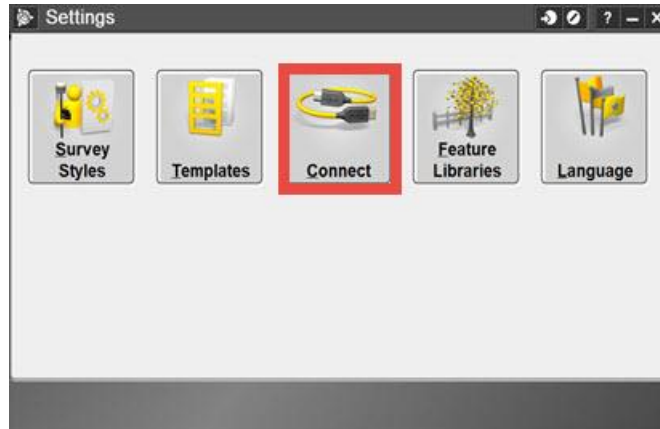
Land & Aerial Survey Office
InCORS Network Administrator
120 South Shortridge Road
Indianapolis, IN 46219-6705
Phone: 317-610-7251, ext. 293
Fax: 317-356-9351
E-mail: incors@indot.in.gov



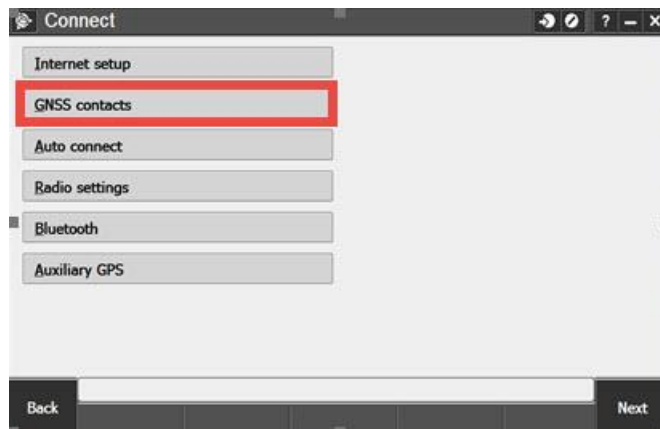
Step 2: On your TSC3, in the Trimble Access screen select Settings.



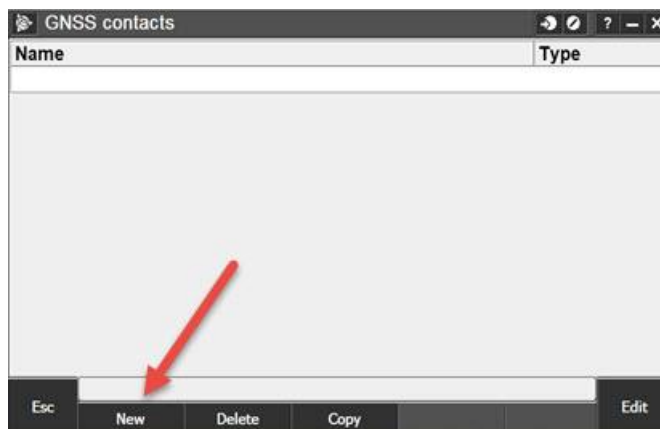
Step 3: Under Settings you will select Connect.



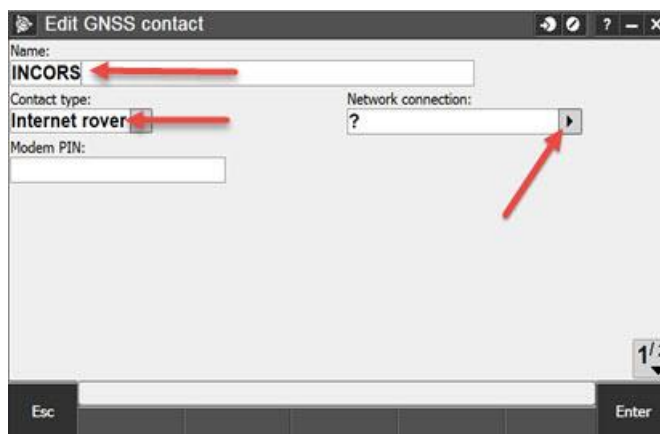
Step 4: Next select GNSS contacts.



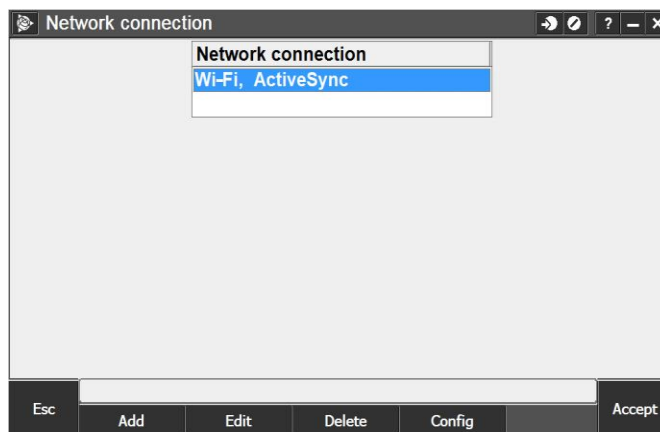
Step 5: Select New.



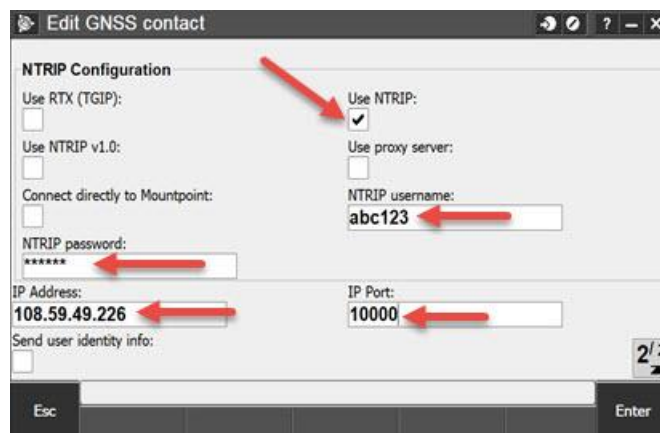
Step 6: Type in a name for your GNSS contact (I prefer keeping it simple “INCORS”). Then tap the drop down arrow next to the Network connection.



Step 7: Select WiFi, ActiveSync to use a mifi/hotspot connection.



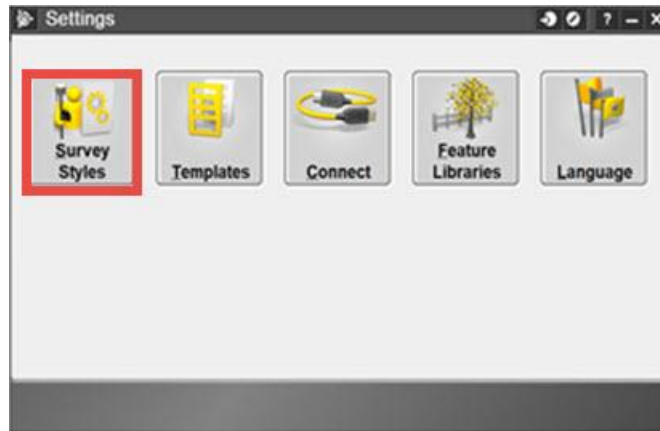
Step 8: Make sure Use NTRIP is checked, type in the NTRIP username and password that INDOT provided you, Type in the IP Address: 108.59.49.226, and type in the IP Port: 10000. Then hit enter.



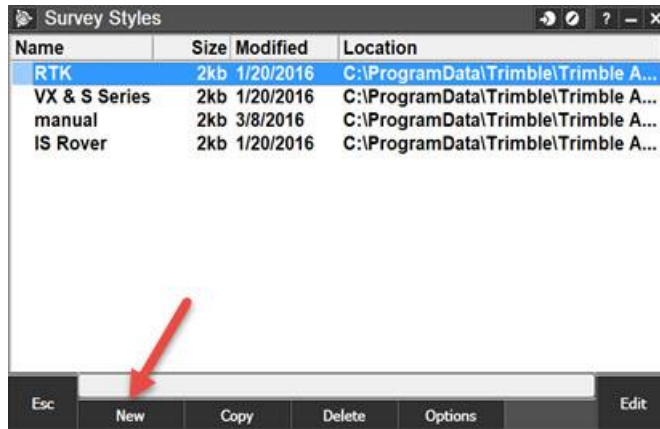
Step 9: Your INCORS GNSS contact is finished.



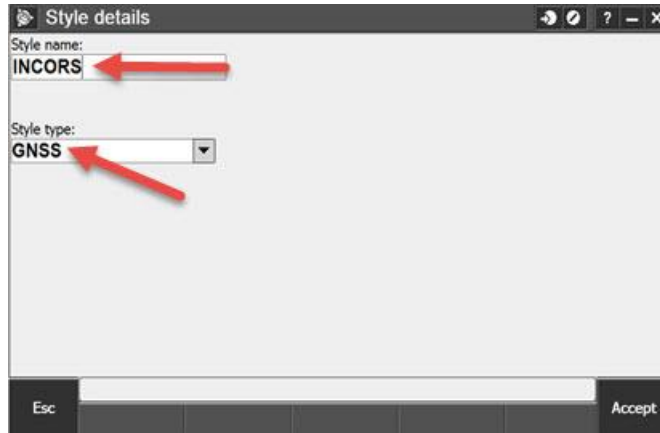
Step 10: Now escape back to your Settings screen and select Survey Style.



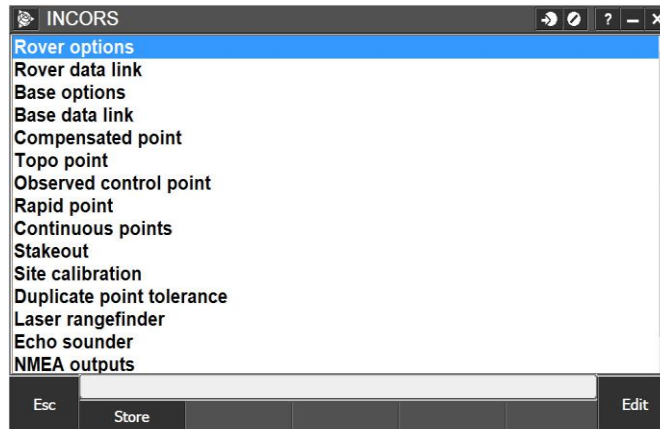
Step 11: Tap New.



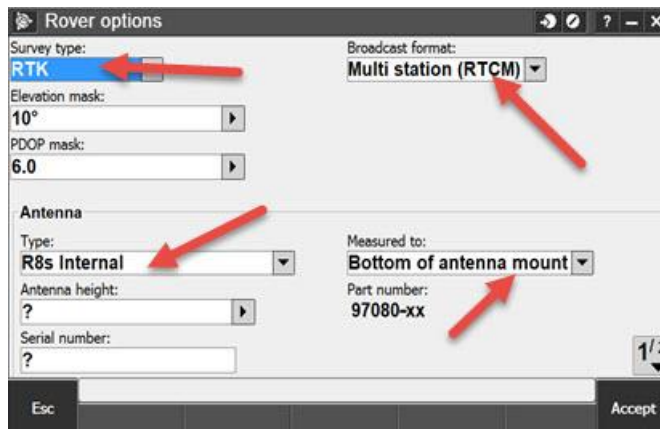
Step 12: Name the Survey Style INCORS and select GNSS for style type. Then Accept.



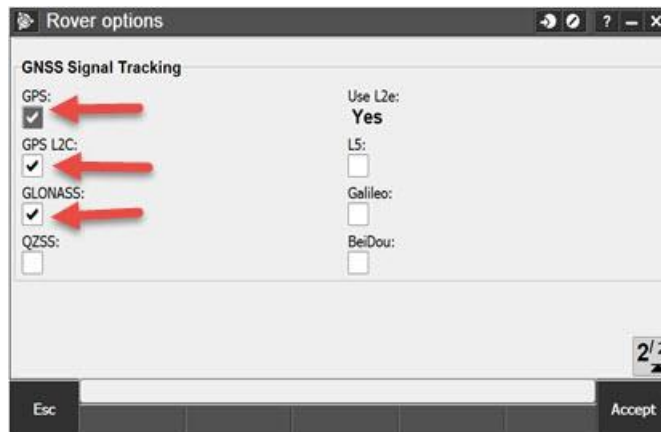
Step 13: Select Rover options.



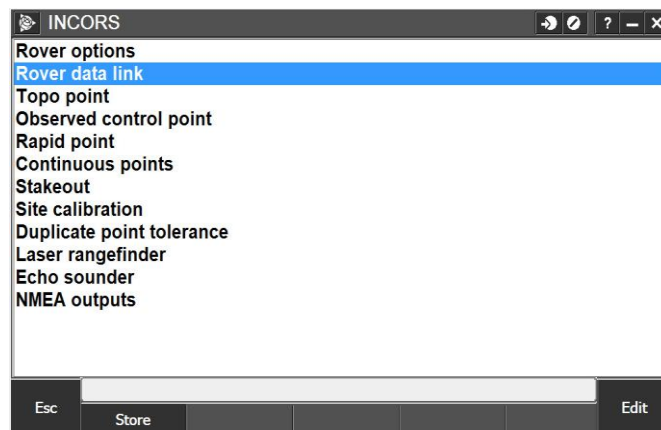
Step 14: Select RTK for Survey type, Multi station (RTCM) for the Broadcast format, leave the mask and PDOP at the default, select your correct Antenna type, select your Measure to (typically Bottom of Antenna mount), you do not need to enter a height or serial number. Now go to page 2.



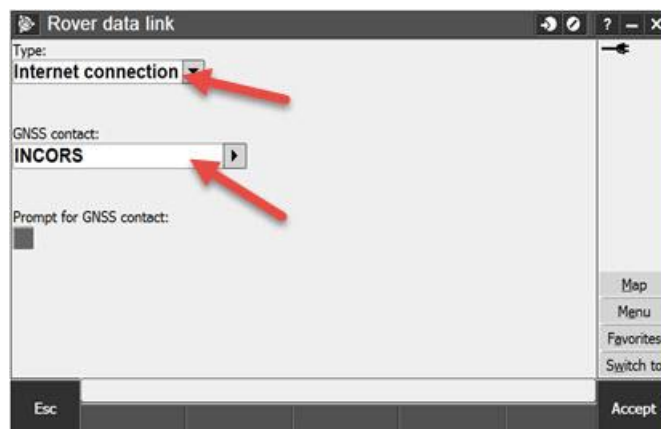
Step 15: Under the GNSS Signal Tracking select the appropriate boxes for your antenna. (The boxes checked here are most typical) Tap Accept



Step 16: Now select Rover data link.



Step 17: Set Type to Internet connection, select the arrow next to the GNSS contact and choose the INCORS GNSS contact you just created. Tap Accept.



Step 18: Tap Store and your INCORS Survey Style is ready to use.

