

**Title: Edit Snapshot**

**Overview:** This document will explain how to edit a snapshot in Trimble Access with a vision instrument.

**Equipment:** Trimble TSC3 w/Access, Trimble S7, Trimble S6 w/vision

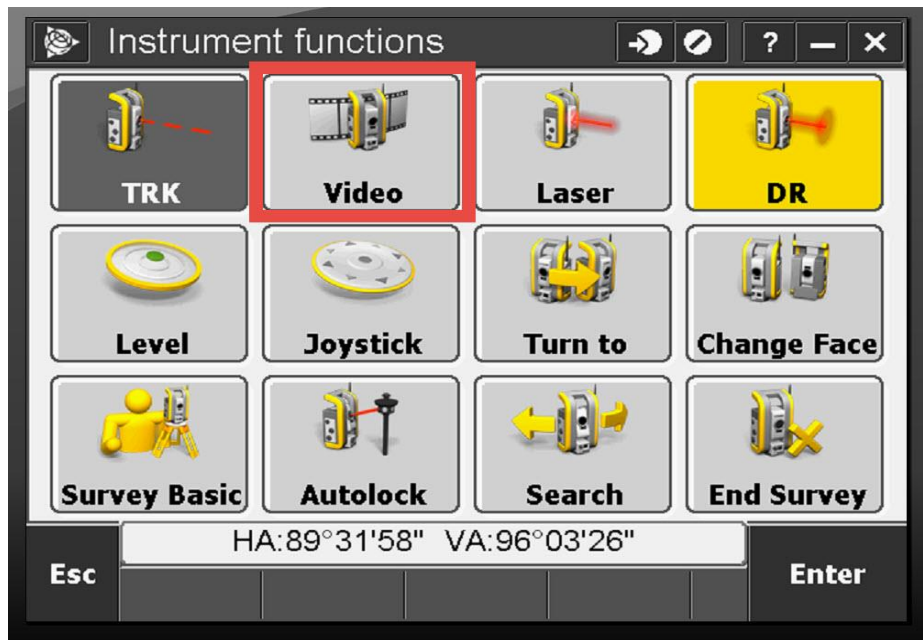


**Results:** User can take snapshots with instrument and edit/label photos in the field. Which allows for note taking on the photo without carrying a field book, or having to remember why you took the photo.

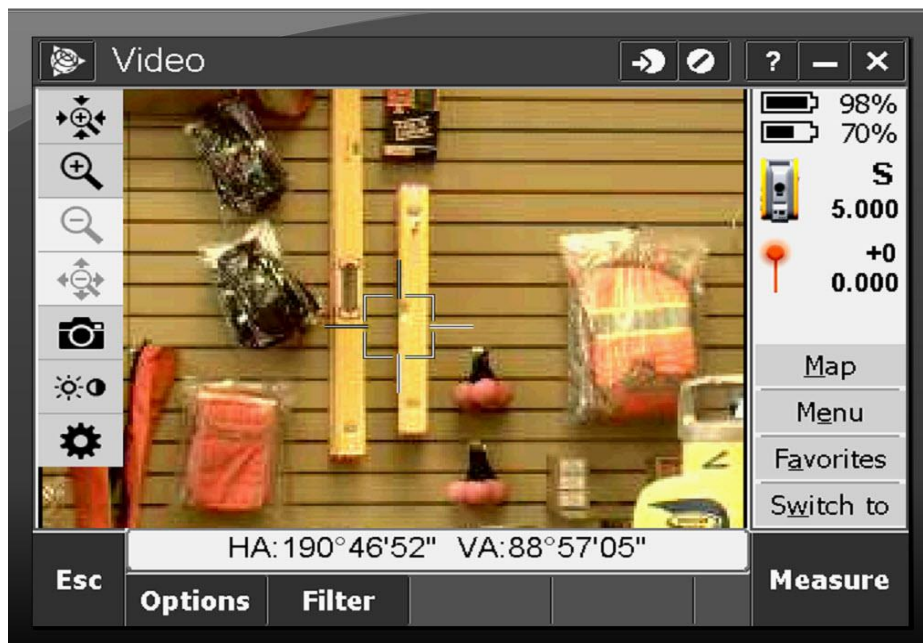
**Procedure:** Step 1: Once you are in Trimble Access with a job started, click on the instrument icon.



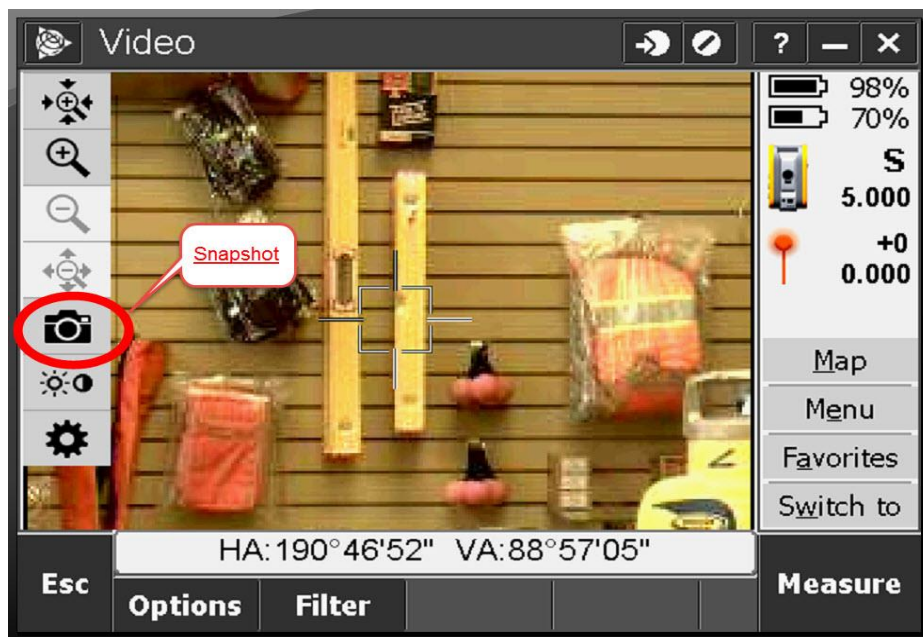
Step 2: Select the Video from the instrument function screen.



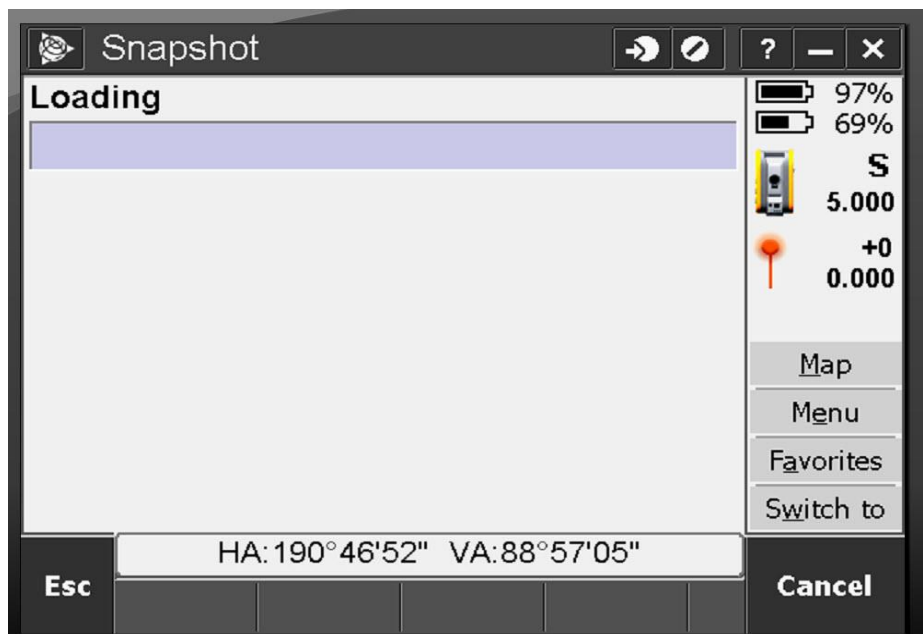
Step 3: The video screen should come up showing you what the instrument is looking at, as well as the different video functions.

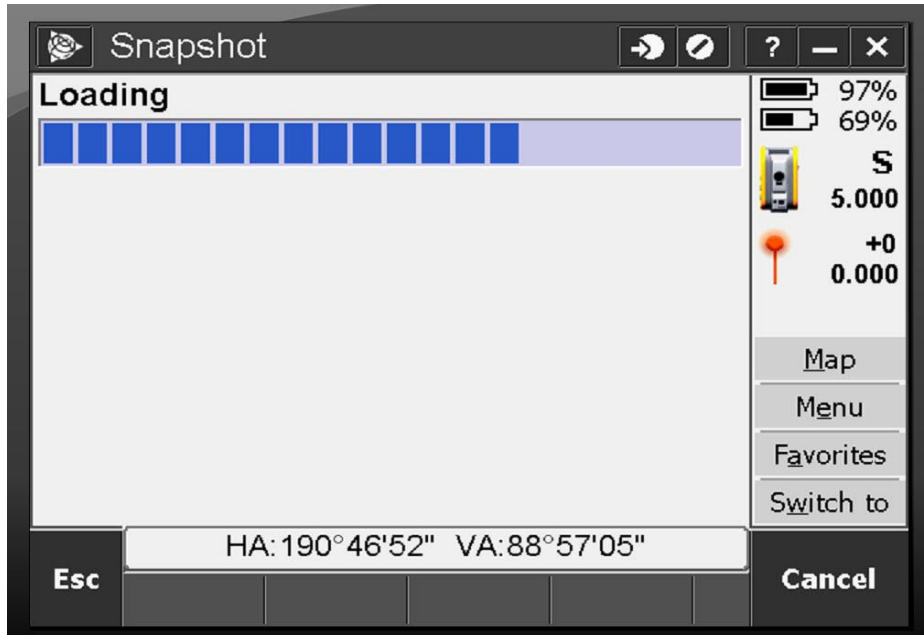


Step 4: Next tap the camera icon to start the Snapshot,

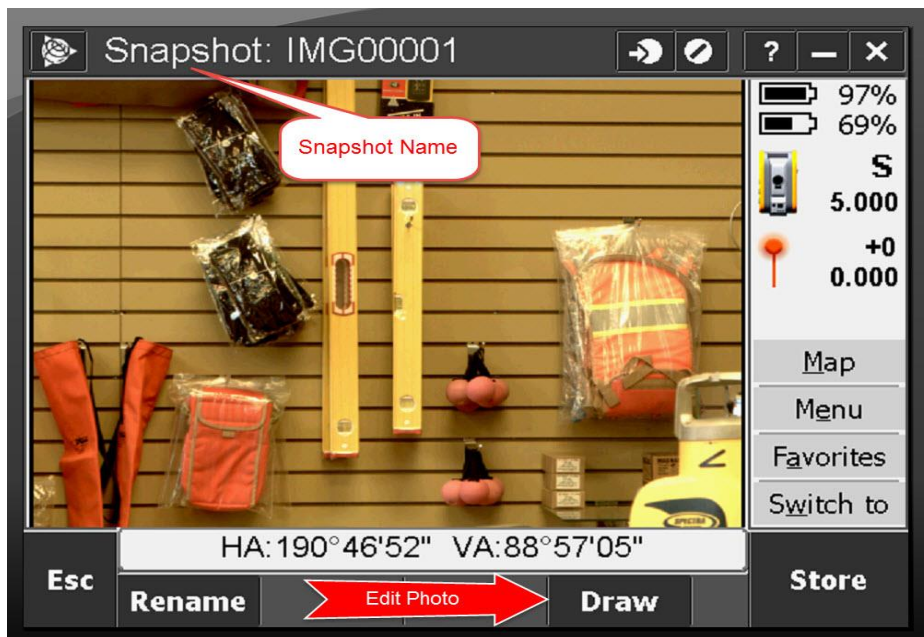


Step 5: The progress bar will show you the status of the snapshot.

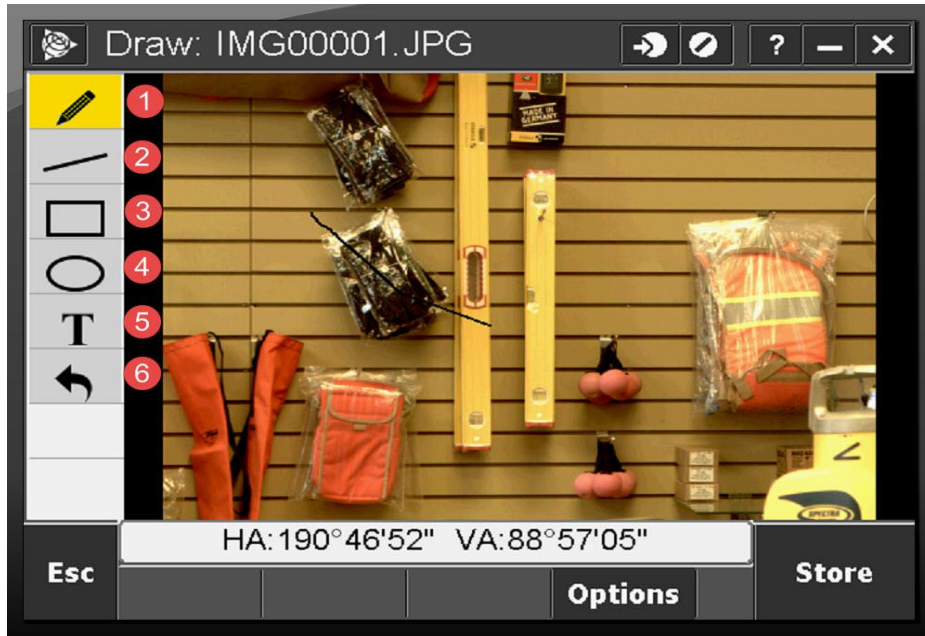




Step 6: The snapshot name is displayed in the top left hand corner. To edit the photo name, tap rename and follow the prompts. To edit/draw on the photo tap draw.



Step 7: Once you tap draw the sidebar menu displays all the available functions



- 1) The pencil icon allows you to draw lines freely.
- 2) The line icon draws straight lines
- 3) The rectangular icon allows you to put a box around something
- 4) The oval allows you to circle an object
- 5) The T icon allows you to put a text box where you want
- 6) The arrow is an undo button

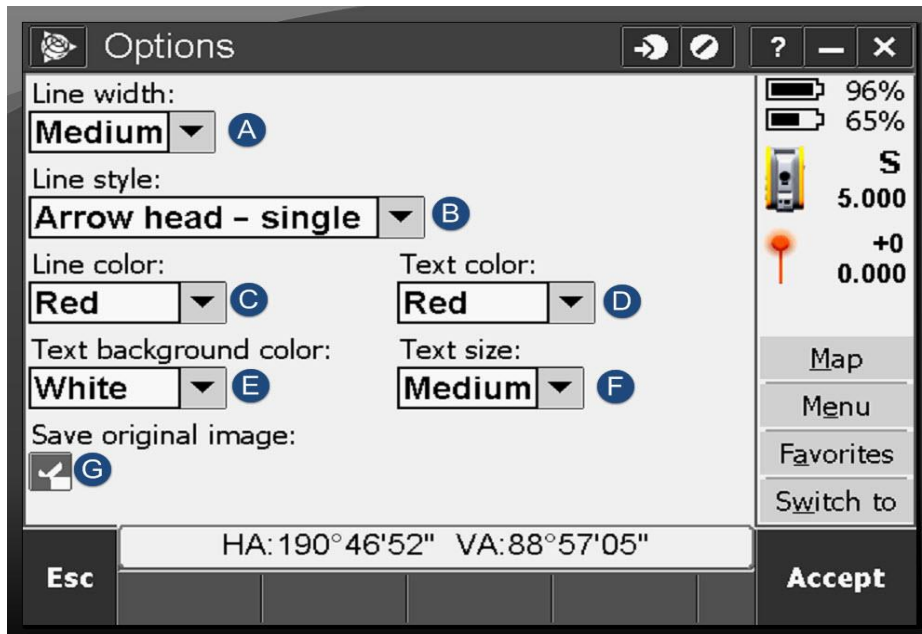
Step 8: As you can see I have drawn arrows and created text boxes to label the photo.



Step 9: By tapping options you can define your settings.



Step 10: Here are your different options.



- A. Line width
- B. Line style
- C. Line color
- D. Text color
- E. Text background color
- F. Text size
- G. Save original image